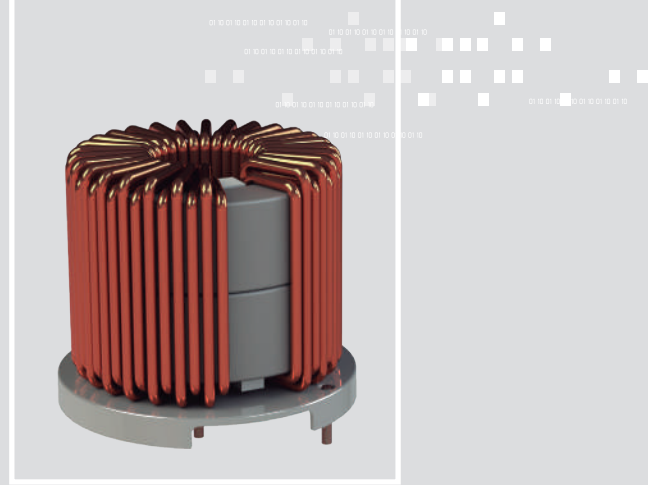


New

## PFCA500-8H

PFC Choke 500 $\mu$ H / 8Arms / 15A<sub>pk</sub> / 90kHz

INDUCTIVE COMPONENTS / PFC CHOKES



### APPLICATIONS

- › Automotive EV/PHV AC/DC onboard battery chargers

### 01 FEATURES

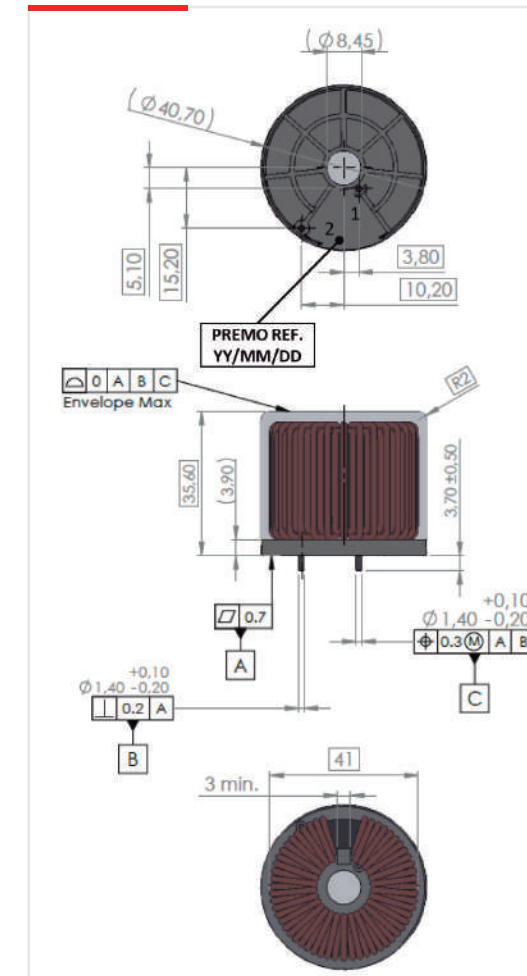
- › PFC Choke for interleaved 3.5kW operation
- › Amorphous core for higher efficiency
- › Wide operating temperature range -40 to +140°C
- › UL94 and RoHS materials
- › AEC-Q200 qualified
- › Weight : approx 120grams

### 02 OPERATION

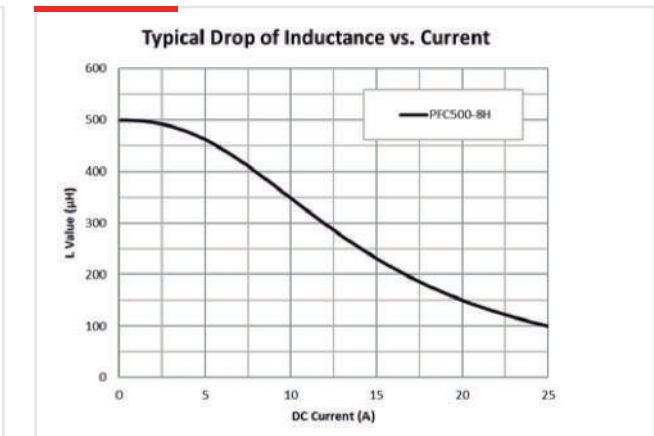
- › Up to 8Arms / 15A<sub>pk</sub>
- › Ripple up to 5A<sub>pp</sub> @90kHz
- › Total losses < 5W @100°C/8Arms+ripple
- › Estimated temperature rise on PCB < 35°C

### 03 SPECIFICATIONS

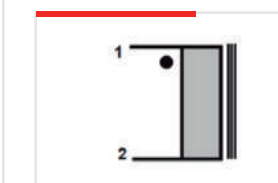
#### DIMENSIONS



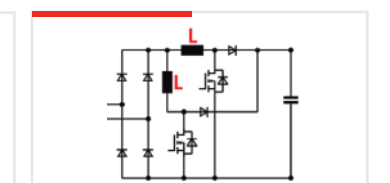
#### TYPICAL PERFORMANCES



#### ELECTRICAL DIAGRAM



#### PFC INTERLEAVED OPERATION



#### ELECTRICAL SPECIFICATIONS

##### INDUCTANCE at 25°C

L0 (10kHz/0.3Vac)	500 $\mu$ H $\pm$ 10%
L15A (10kHz/0.3Vac/15A <sub>dc</sub> )	175 $\mu$ H MIN
L22A (10kHz/0.3Vac/22A <sub>dc</sub> )	115 $\mu$ H MIN

##### DC RESISTANCE at 25°C

DCR	50m $\Omega$ TYP (60m $\Omega$ MAX)
-----	-------------------------------------