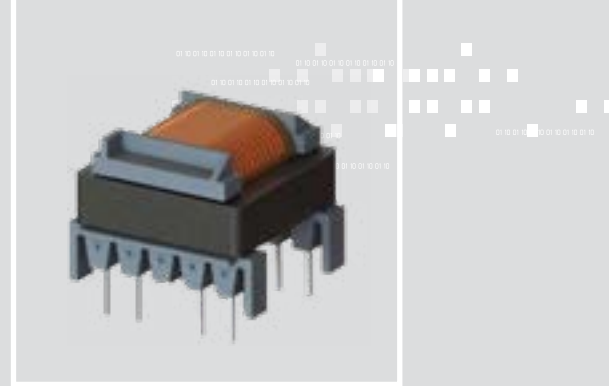


FLYT-008

Flyback Tr. 510uH 63:8:8:5

INDUCTIVE COMPONENTS / FLYBACK TRANSFORMER



APPLICATIONS

- › Automotive EV/PHV AC/DC onboard battery chargers

01 FEATURES

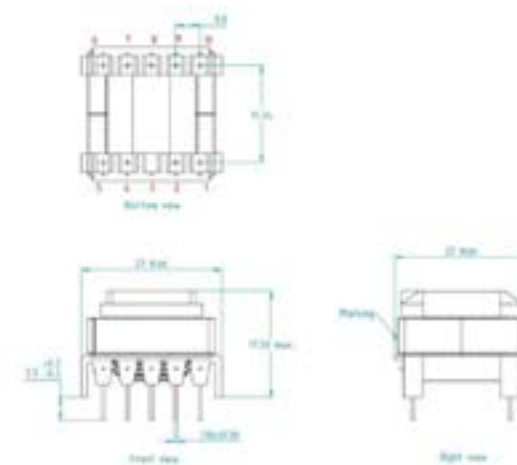
- › Continuous-Conduction Mode Fly-back
- › Weight : approx 13g.

02 OPERATION

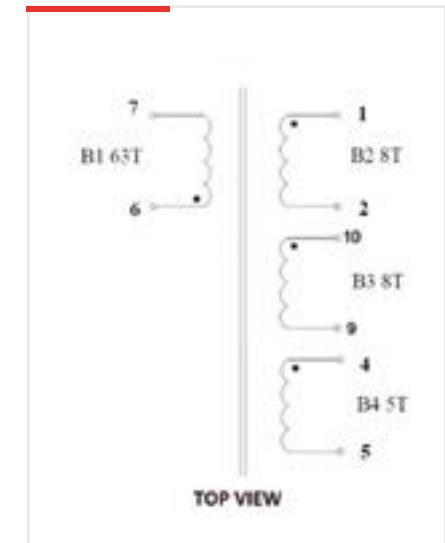
- › Operating temperature -25/+125°C
- › ESTIMATED TOTAL LOSSES (@132kHz, Pout=25W, Vin=210V, 100°C):
- › Copper losses (DC) 210 mW
- › Core losses 300 mW
- › Total losses 0.51 W

03 SPECIFICATIONS

DIMENSIONS (mm)



ELECTRICAL DIAGRAM



ELECTRICAL SPECIFICATIONS

MAG. INDUCTANCE at 25°C	
L (6 - 7)	510uH TYP (578uH Max)
LEAKAGE INDUCTANCE	
PRIMARY (6 - 7) (All secondary windings are shorted)	12 uH MAX
DC RESISTANCE at 25°C	
PRI (B1), pin 6 to 7	730 mΩ TYP (912 mΩ MAX)
SEC (B2), pin 1 to 2	35 mΩ TYP (43.5 mΩ MAX)
SEC (B3), pin 9 to 10	38.6 mΩ TYP (48.2 mΩ MAX)
SEC (B4), pin 4 to 5	150 mΩ TYP (188 mΩ MAX)

DIELECTRIC STRENGTH	
Between PRI (B1) and SEC (B2,B3,B4)	3000V (50/60Hz; 3 mA; 2 sec)
Between SEC(B2) and SEC (B4)	1000V (50/60Hz; 3 mA; 2 sec)
Between all windings and CORE	1500V (50/60Hz; 3 mA; 2 sec)
TURN RATIO (10kHz/1Vac)	
B1 : B2 : B3 : B4	63 : 8 : 8 : 5